

2024 School Statistics Analysis Report

The Lutheran Church – Missouri Synod
Office of National Mission, School Ministry Department &
Office of Rosters, Statistics, and Research Services

7/12/2024

Data Sets and Disclaimers

- The following statistical analysis comes from data reported on the 2023-2024 *Early Childhood and School Statistical Report* and from official school data submitted to the LCMS Office of Rosters and Statistics.
- Data from the *Early Childhood and School Statistical Report* represents a 76% submission rate from Lutheran schools and does not include the 24% which chose not to submit their data.
- From 2018-2019 forward, school “Type” is now collected by individual grade level, not by “EC, EL, or HS” groupings. As such, data related to “Schools by Type” now indicate the number of schools indicating they contain these grade levels.
- Data related to “Schools by Size” contain all current schools and their most recently reported enrollment numbers.

Statistics and Demographics

Schools by Type

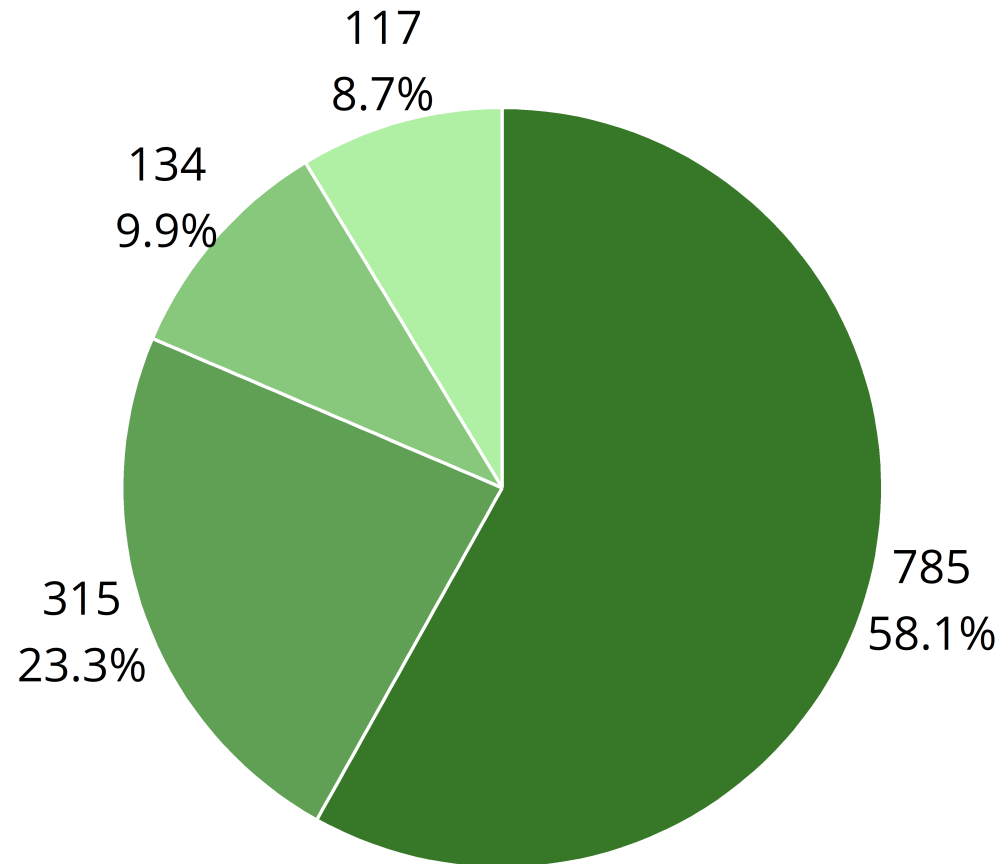
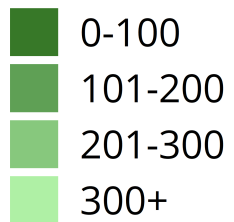
Total Number of Schools	Early Childhood	Elementary Schools (K-8)	High Schools (9-12)
1,776	1,707	732	109

** The number of schools listed in each section represents schools that have indicated that they contain grade levels in the indicated area and as such may be counted in multiple sections.*

Schools by Size

Reporting: 1,352

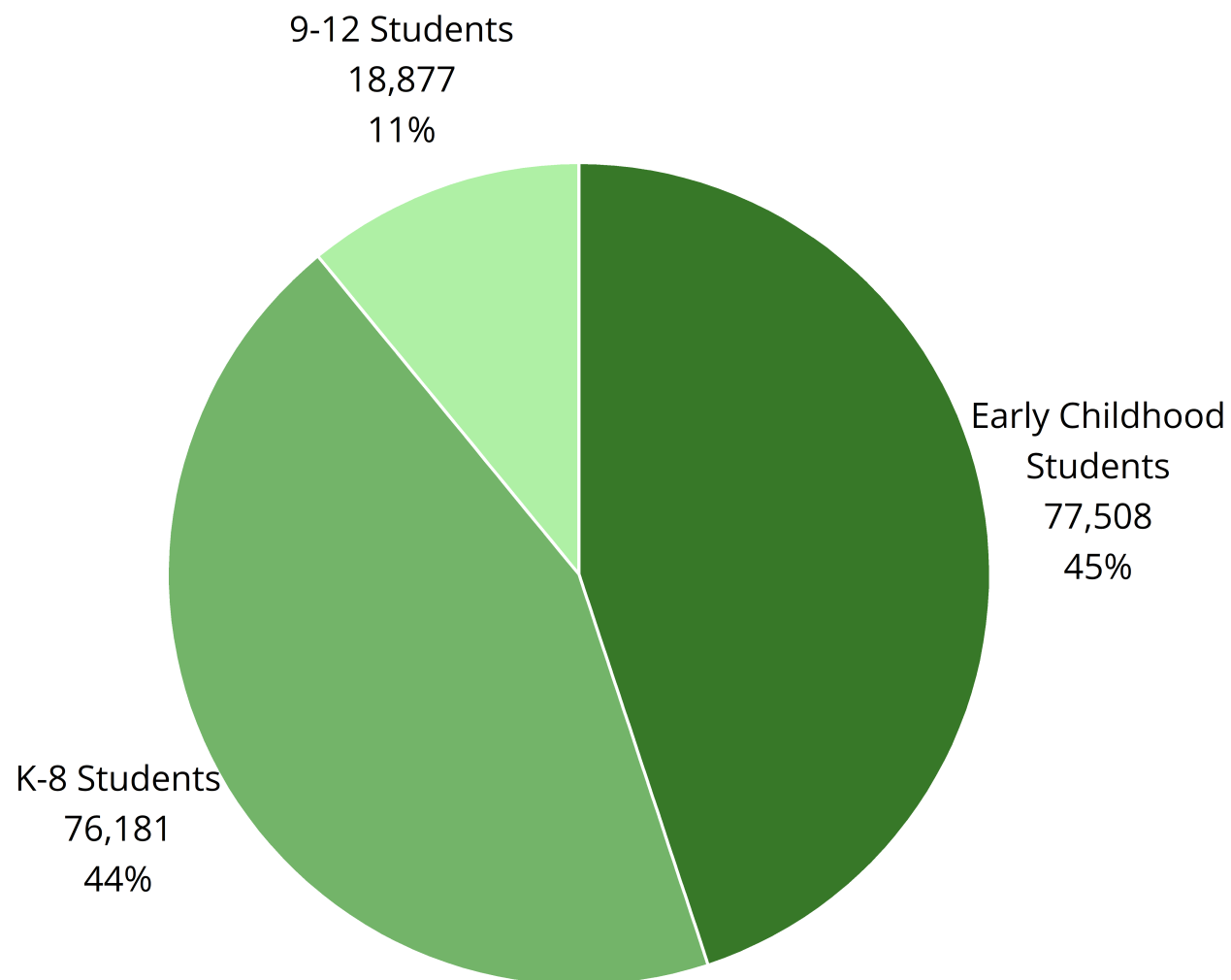
Enrollment



Total Students Enrolled		#	pct
	0-100	785	58.1%
	101-200	315	23.3%
	201-300	134	9.9%
	301-400	48	3.6%
	401-500	29	2.1%
	501-600	17	1.3%
	601-700	13	1.0%
	701-800	2	<1%
	801-900	3	<1%
	901-1000	2	<1%
	1000+	3	<1%

Students by Grade

Total Students: 172,566



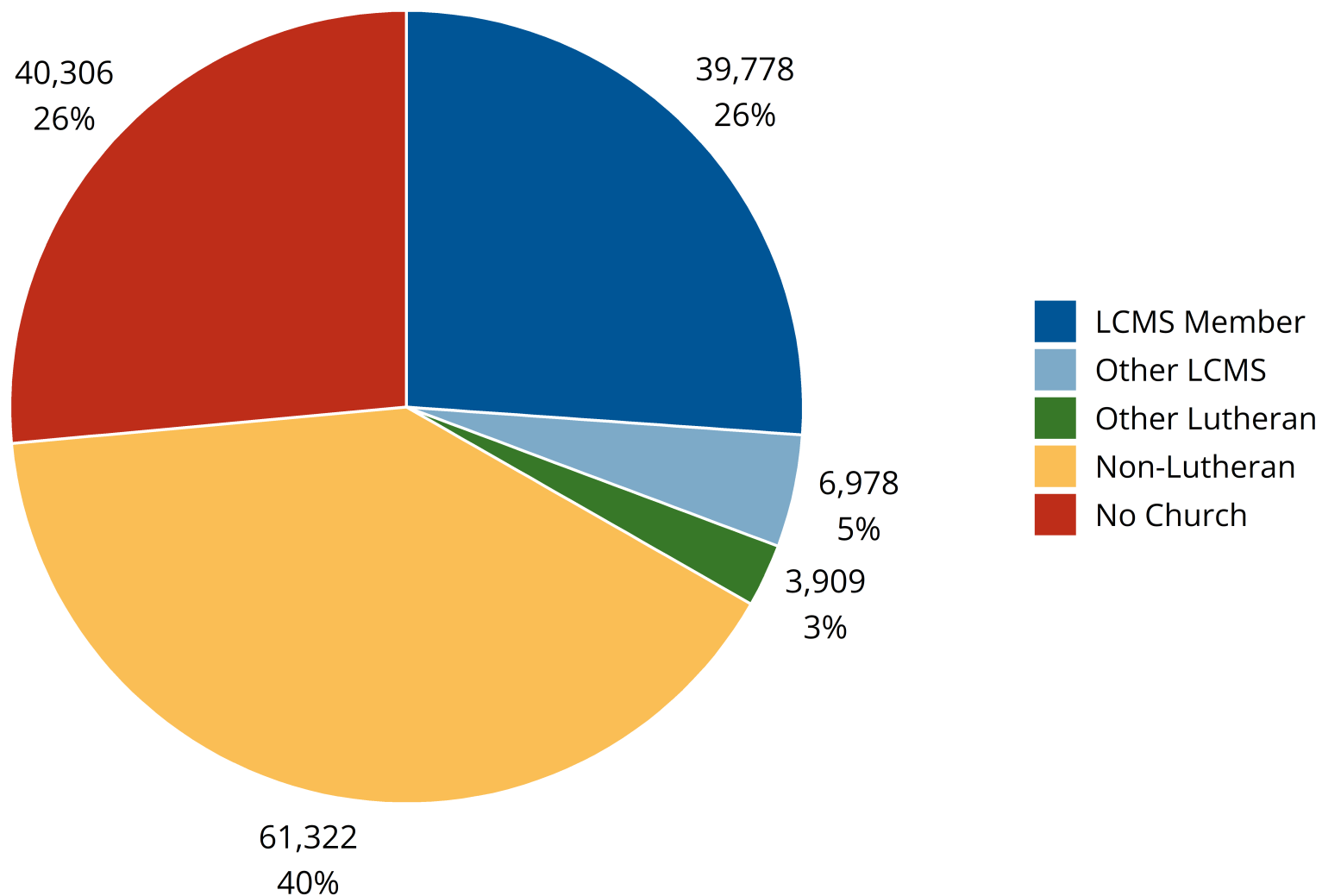
Student Demographics: Ethnicity

Ethnicity Reported: 163,938

	Asian	Black or African American	Hispanic or Latino	Native American	Native Hawaiian or Pacific Islander	White	Two or More Races	Other
Number of Students	6,888	11,223	10,815	657	682	120,051	10,407	3,215
Percentage of Enrollment	4%	7%	7%	<1%	<1%	73%	6%	2%

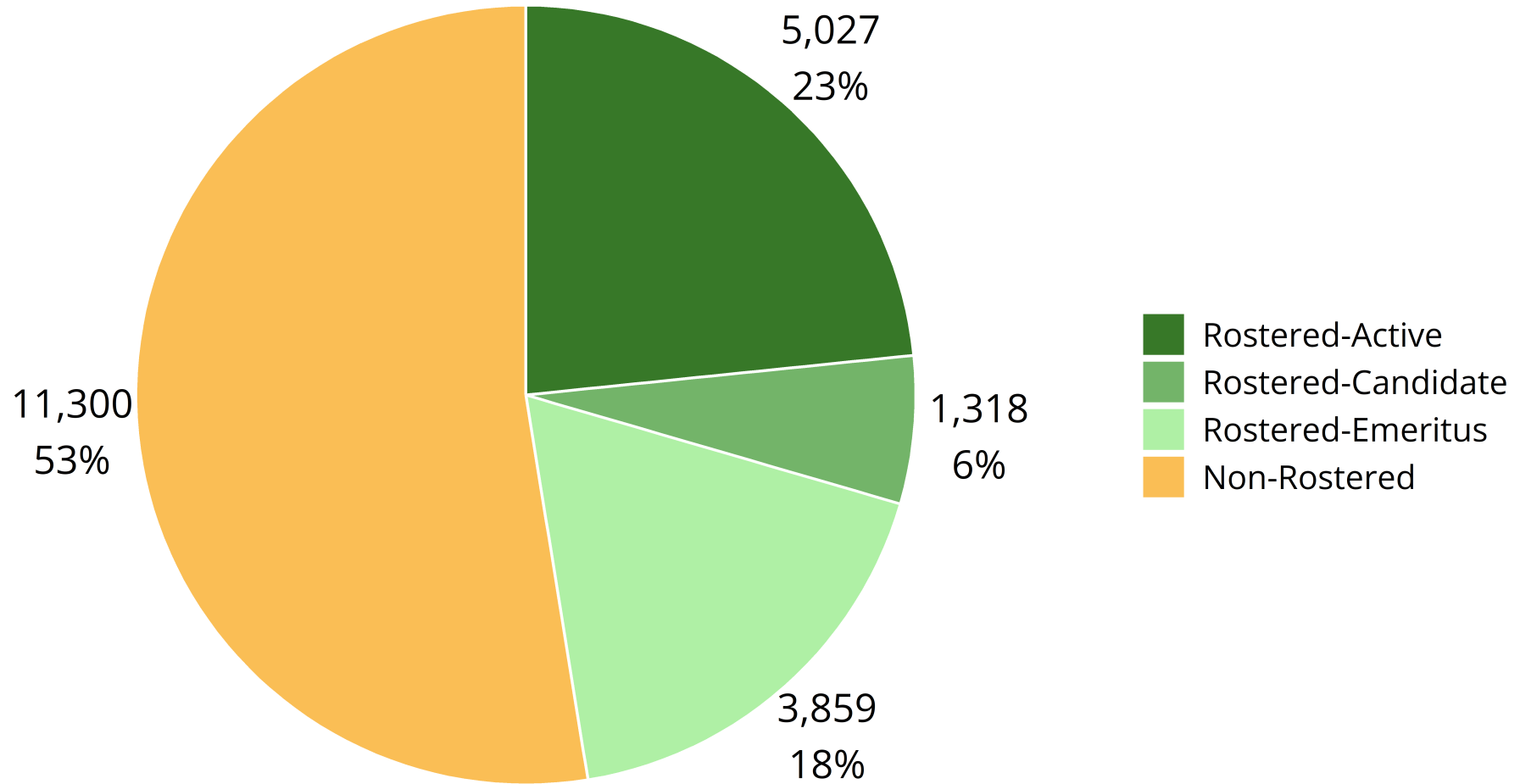
Student Demographics: Church Membership

Membership Reported: 152,293

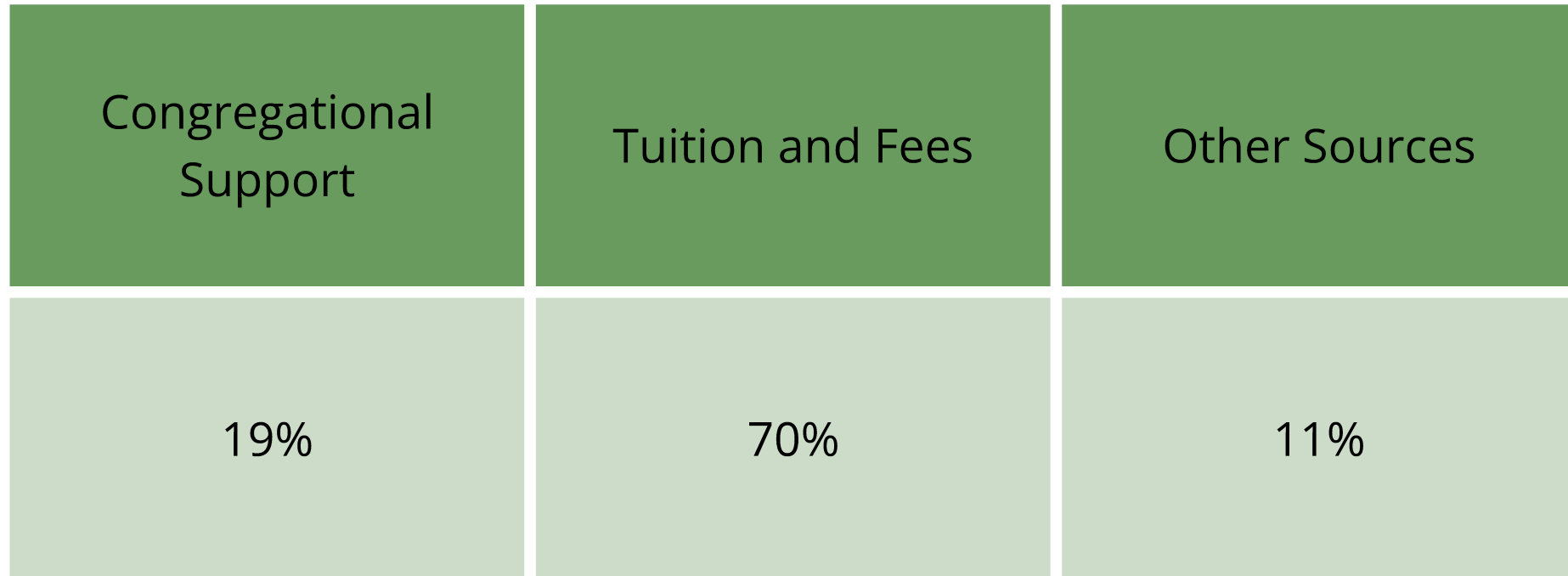


Current Educators

Total Educators: 21,504

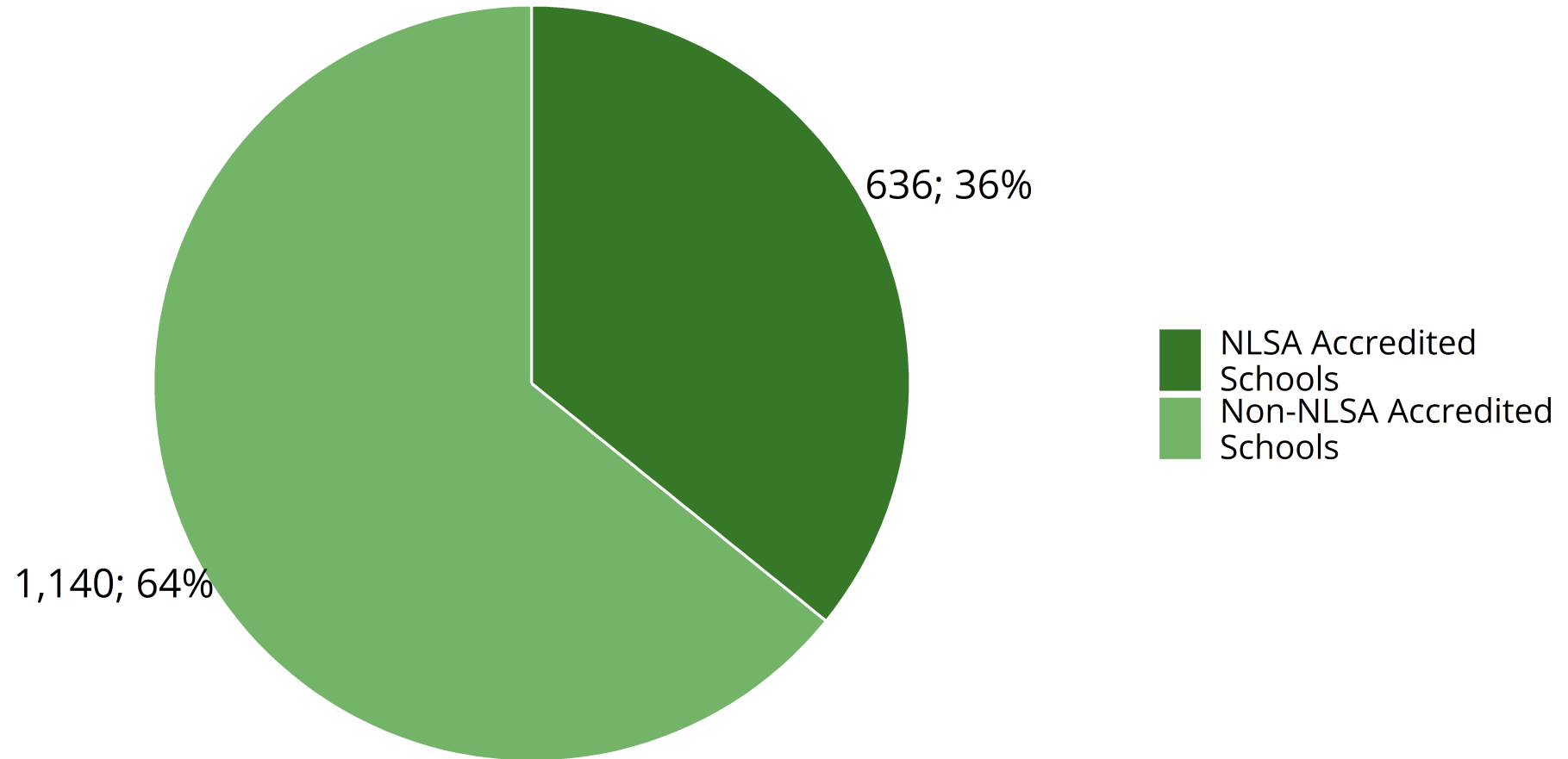


School Funding Support



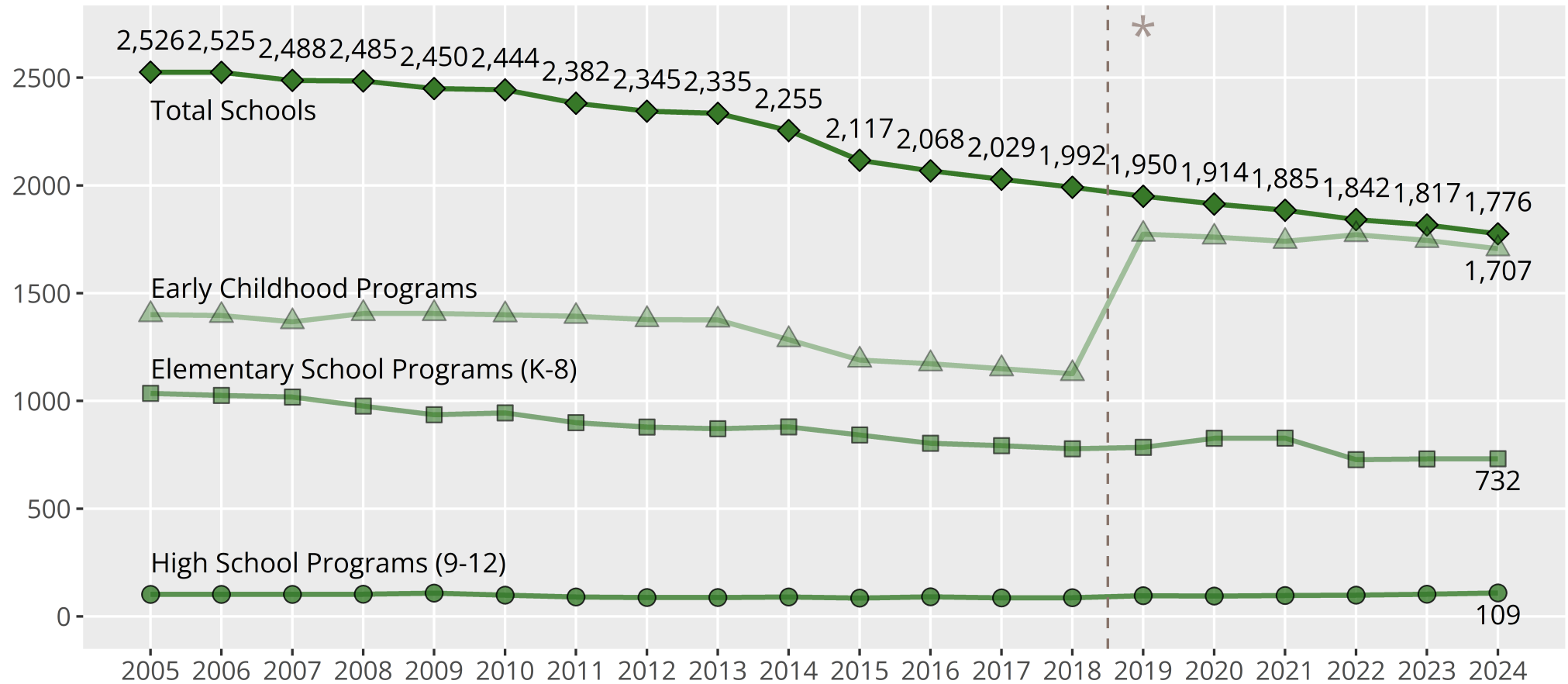
** Note: These numbers represent an average of overall percentages submitted by schools for each individual response (as they are an average of an average, they may not always perfectly total 100%).*

Current NLSA Schools



Statistical Trends Over Time

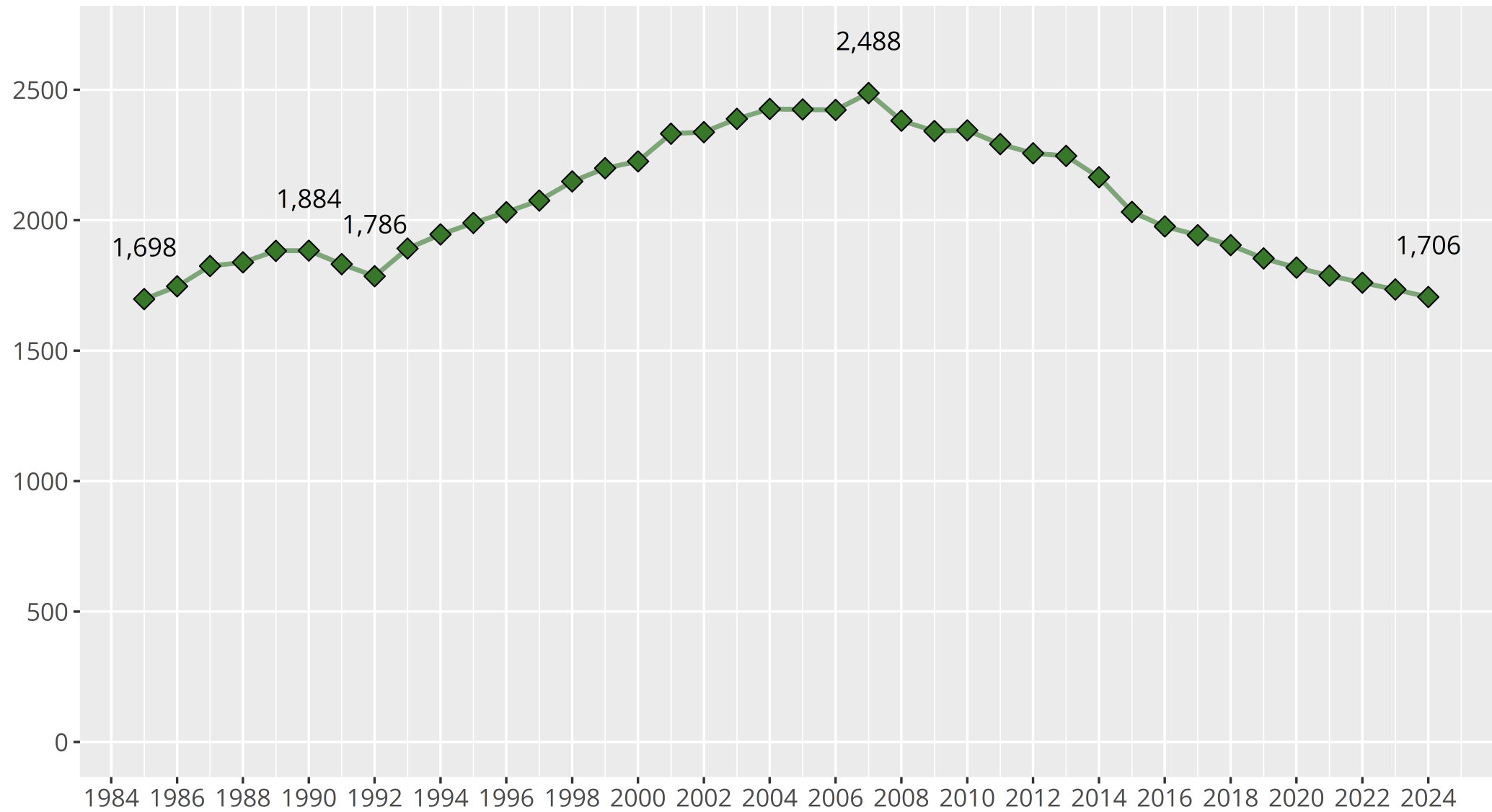
Number of Schools By Year



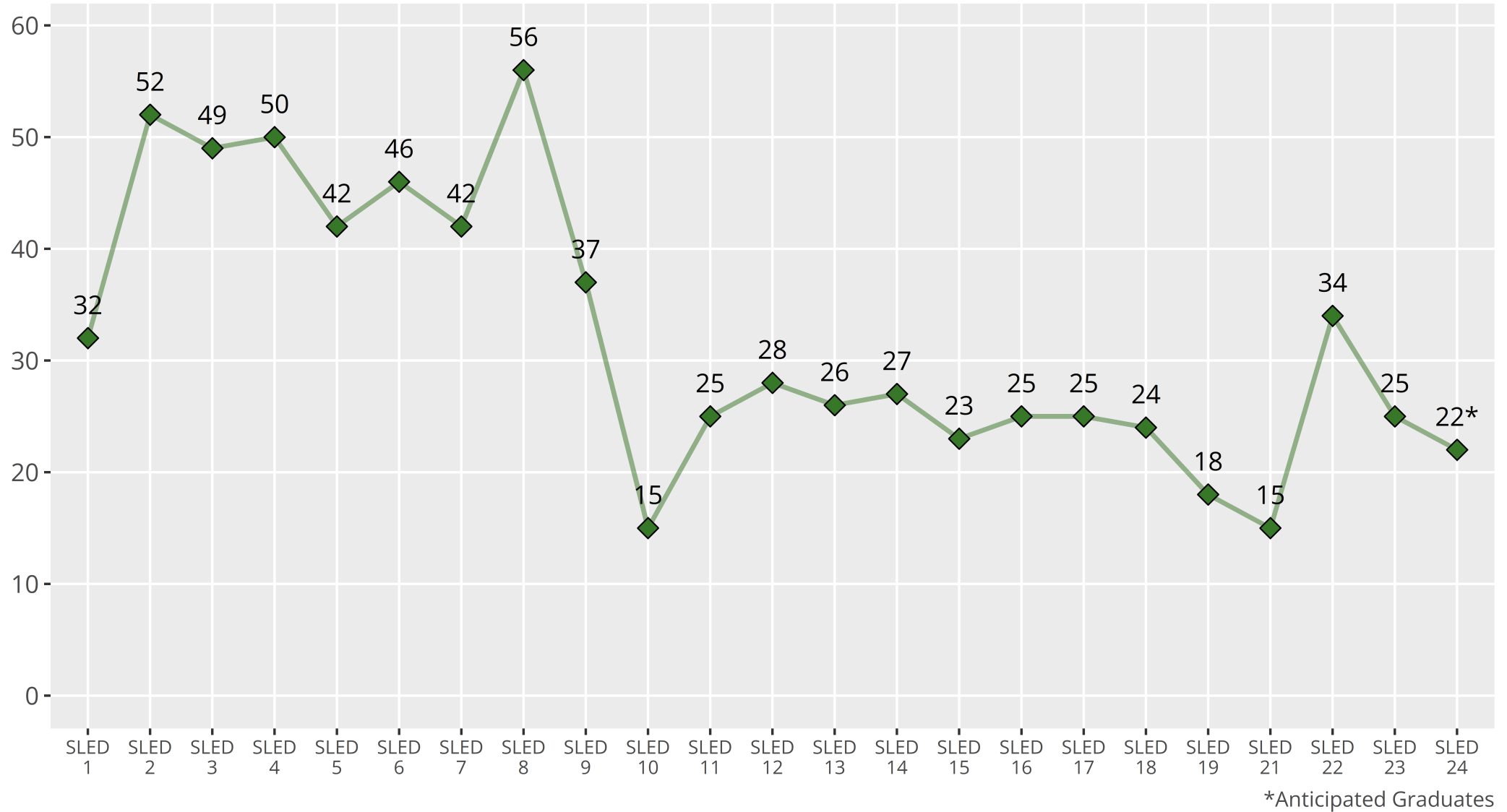
*From the 2018-2019 school year forward, school "Type" is collected by individual grade level, not by "EC, EL, or HS" groupings. As such, data related to "Schools by Type" now indicate the number of schools indicating they contain these grade levels.

The visible decline in elementary schools in 2022, is because this total no longer classifies schools that only have a Kindergarten as "elementary" (elementary school totals in previous years included all Kindergartens, even those without higher grades).

Number of EC/EL Schools



Trend: SLED Graduates



Emeritus Changes

	2016-17	2017-18	2018-19	2019-20	2020-21	2021-22	2022-23	2023-24
Number of Emeritus Educators	3,030	3,180	3,334	3,492	3,593	3,669	3,831	3,859
Cumulative Change Since 2017		+150	+304	+462	+563	+639	+801	+829